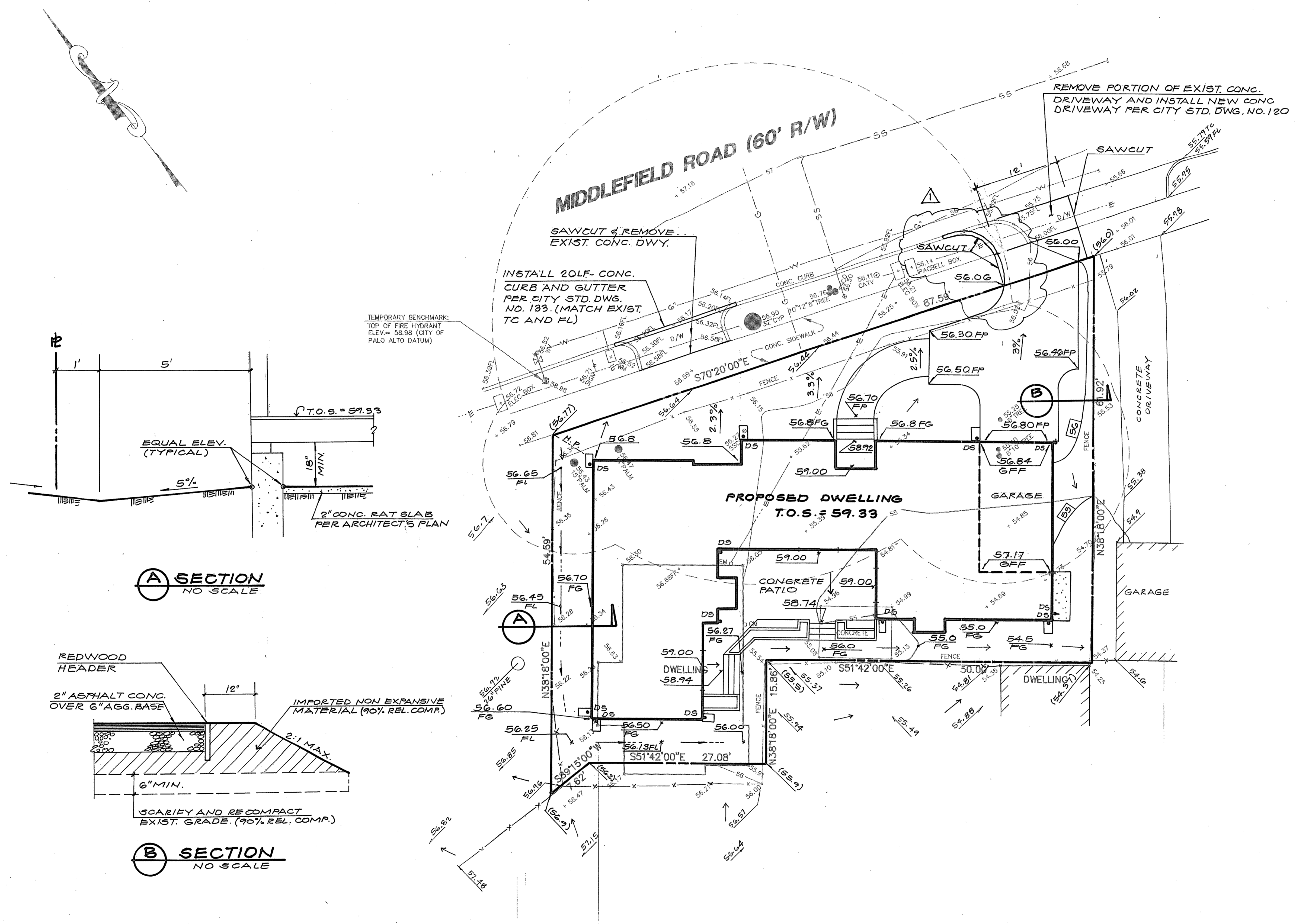


NOTES:

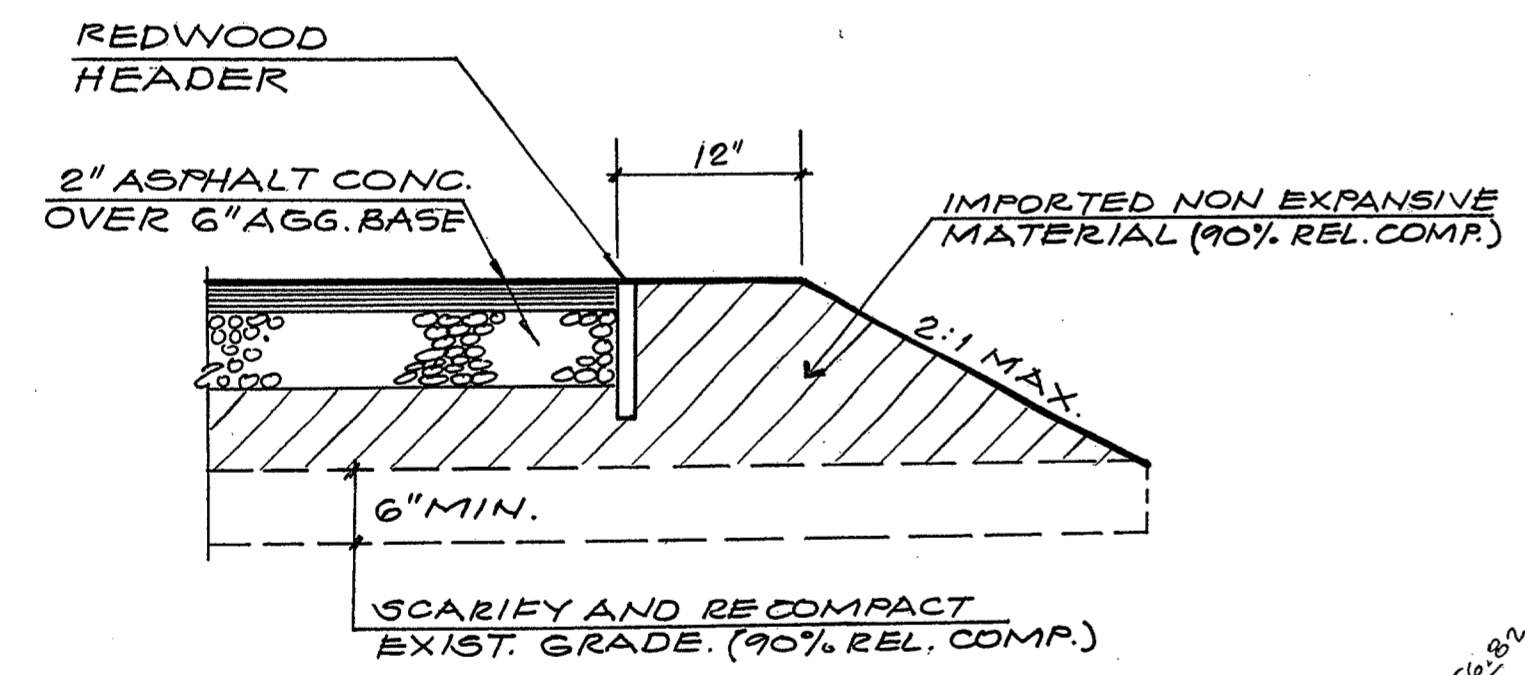
1. RAIN WATER LEADERS SHALL BE DISPERSED TO SPLASH BLOCKS OR TO IMPERVIOUS AREAS.
2. ALL MATERIALS SHALL BE FURNISHED AND INSTALLED BY THE CONTRACTOR UNLESS OTHERWISE NOTED.
3. WHEN APPLICABLE, ALL CONSTRUCTION MATERIALS AND METHODS SHALL COMPLY WITH THE ORDINANCES, SPECIFICATIONS AND STANDARDS OF THE CITY OF PALO ALTO UNLESS OTHERWISE NOTED.
4. CONTRACTOR SHALL NOTIFY UNDERGROUND SERVICE ALERT (U.S.A.) PRIOR TO START OF ANY CONSTRUCTION.
5. THE CONTRACTOR SHALL BE RESPONSIBLE FOR DISTRIBUTING ANY EXCESS MATERIAL OR SUPPLYING MATERIAL FOR DEFICIENCIES TO BRING DRIVEWAY AND BUILDING PADS TO REQUIRED GRADE.
6. UTILITIES AND UNDERGROUND FACILITIES INDICATED ARE FOR INFORMATION ONLY. IT IS THE CONTRACTOR'S RESPONSIBILITY TO VERIFY THE LOCATION AND DEPTH WITH THE APPROPRIATE AGENCIES. NEITHER THE OWNER NOR THE CITY OR THE ENGINEER ASSUMES RESPONSIBILITY THAT THE UTILITIES AND UNDERGROUND FACILITIES INDICATED WILL BE THE UTILITIES AND UNDERGROUND FACILITIES ENCOUNTERED.
7. THE CONTRACTOR IS RESPONSIBLE FOR MATCHING EXISTING SURROUNDING LANDSCAPE AND OTHER IMPROVEMENTS WITH A SMOOTH TRANSITION IN PAVING, GRADING, ETC., AND TO AVOID ABRUPT OR APPARENT CHANGES OR CROSS SLOPES, LOW SPOTS OR HAZARDOUS CONDITIONS.
8. THE CONTRACTOR SHALL OBTAIN AN ENCROACHMENT PERMIT FROM THE CITY OF PALO ALTO (ENGINEERING DEPARTMENT) PRIOR TO START OF ANY WORK WITHIN THE PUBLIC RIGHT-OF-WAY.
9. THE SOILS REPORT PREPARED BY HARLAN TAIT ASSOCIATES, PROJ. NO. 850-450, DATED FEBRUARY 9, 2001, SHALL BE MADE A PART OF THIS PLAN.
10. ALL SPLASH BLOCKS SHALL BE PRECAST CONCRETE CHRISTY TYPE MODEL M50SPBI OR APPROVED EQUAL.

LEGEND:

TC	TOP OF CURB
FL	FLOW LINE
FP	FINISHED PAVEMENT
DS	DOWN SPOUT
T.O.S.	TOP OF SUB FLOOR
GFF	GARAGE FINISHED FLOOR
FG	FINISHED GRADE
56	NEW CONTOUR



(A) SECTION
NO SCALE



(B) SECTION
NO SCALE

GRADING AND DRAINAGE PLAN
102 MIDDLEFIELD ROAD
PALO ALTO, CALIFORNIA

PREPARED FOR: PACIFIC PENINSULA ARCHITECTURE

MacLEOD AND ASSOCIATES, INC.
CIVIL ENGINEERING • LAND SURVEYING

930 TANKLAGE RD. • SAN CARLOS • CA 94070 • (650) 593-8580

DRAWN BY: VFB	SCALE: 1"=8'	DRAWING NO.
CHECKED BY: DSM	DATE: 8-09-01	1662-00
TRACED BY:	APP'D:	SHEET 1 OF 1

